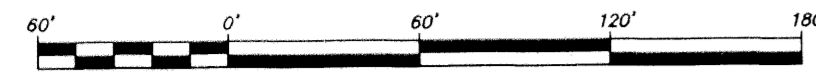
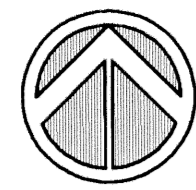


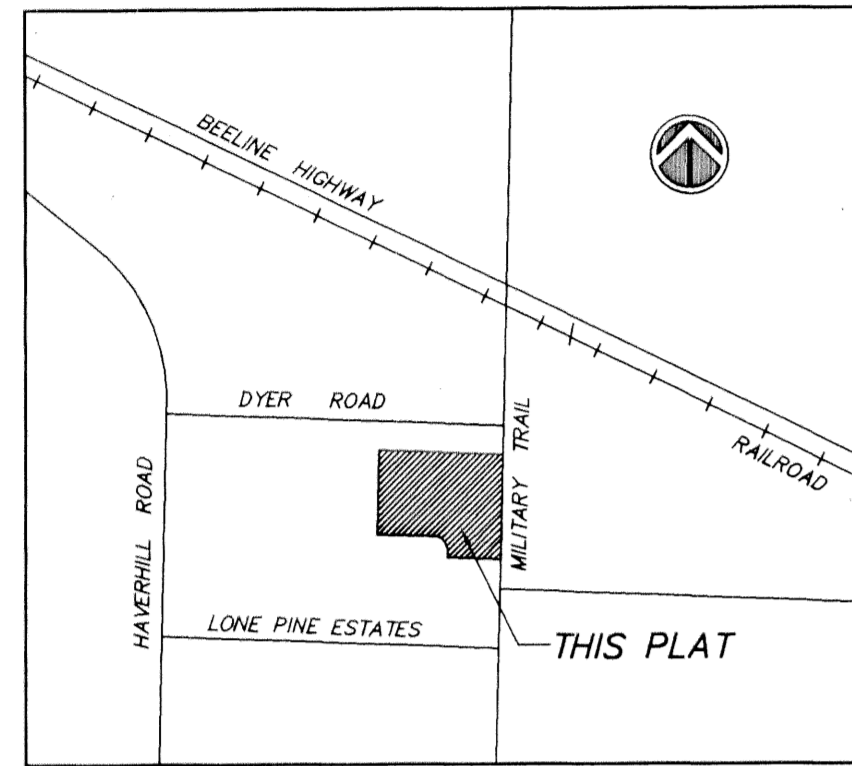
INDIAN TRACE APARTMENTS

BEING A PORTION OF NORTHWEST 1/4 OF SECTION 36, TOWNSHIP 42 SOUTH, RANGE 42 EAST
CITY OF RIVIERA BEACH, PALM BEACH COUNTY, FLORIDA



SCALE: 1 inch = 60 feet

LOCATION MAP: NOT TO SCALE



NORTH LINE OF THE SOUTH ONE-QUARTER OF THE NORTH HALF OF THE NORTHWEST ONE-QUARTER OF SECTION 36

"NOT PLATTED"

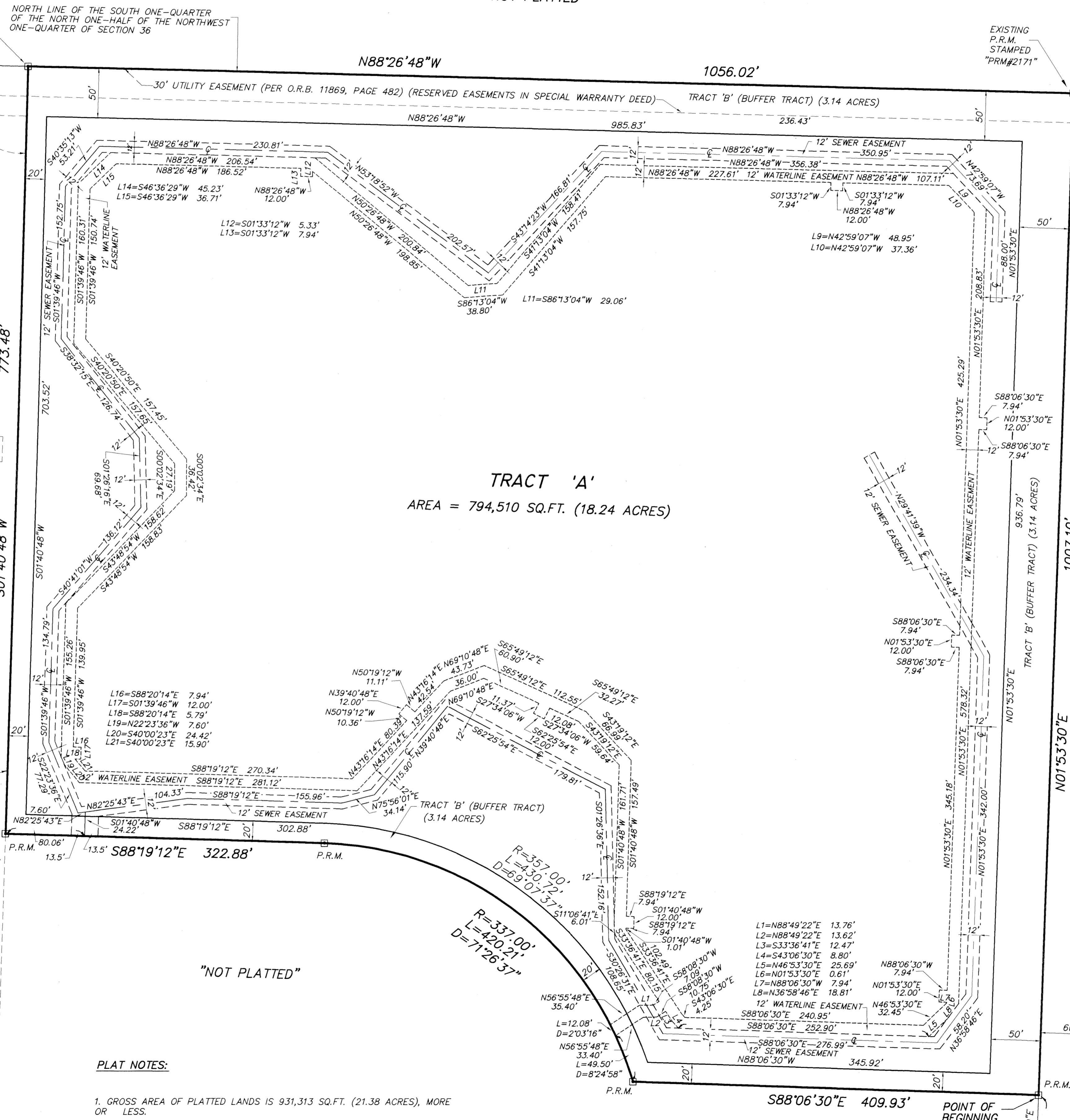
EXISTING P.R.M. STAMPED "PRM#2171"

FOUND 1-1/2" IRON PIPE NORTHEAST CORNER N.W. ONE-QUARTER SECTION 36-42-42

NON-EXCLUSIVE OUTFALL DRAINAGE EASEMENT DEED AND AGREEMENT (PER O.R.B. 12720, PG. 357, P.B.C.R.)

"NOT PLATTED"

NON-EXCLUSIVE OUTFALL DRAINAGE EASEMENT DEED AND AGREEMENT (PER O.R.B. 12720, PG. 357, P.B.C.R.)



TRACT 'A'
AREA = 794,510 SQ.FT. (18.24 ACRES)

TRACT 'B' (BUFFER TRACT)
(3.14 ACRES)

MILITARY TRAIL (STATE ROAD 809)

"TRAILSIDE ASSOCIATES"
PLAT BOOK 49, PAGE 47 & 48, P.B.C.R.

- LEGEND:**
- P.B.C.R. = PALM BEACH COUNTY RECORDS
 - O.R.B. = OFFICIAL RECORDS BOOK
 - ☉ = CENTERLINE
 - P.R.M. = PERMANENT REFERENCE MONUMENT (4" x 4" CONCRETE MONUMENT & CAP)
 - NO. = NUMBER
 - PG. = PAGE
 - P.B. = PLAT BOOK
 - - - = BREAK IN LINE SCALE
 - Sq. Ft. = SQUARE FEET
 - A = ARC
 - D = DELTA
 - R = RADIUS
 - U.E. = UTILITY EASEMENT

- PLAT NOTES:**
1. GROSS AREA OF PLATTED LANDS IS 931,313 SQ.FT. (21.38 ACRES), MORE OR LESS.
 2. BEARINGS SHOWN HEREON ARE BASED ON OR ARE RELATIVE TO THE BEARING OF N01°53'30"E, ALONG THE EAST LINE OF THE NORTHWEST ONE-QUARTER (NW 1/4) OF SECTION 36, TOWNSHIP 42 SOUTH, RANGE 42 EAST, AS SHOWN HEREON.

POINT OF BEGINNING
POINT OF COMMENCEMENT
SOUTHEAST CORNER
N.W. ONE-QUARTER
SECTION 36-42-42

RECORD PLAT PREPARED BY:

TECH Sun-Tech Engineering, Inc.
Engineers - Planners - Surveyors
Certificate of Authorization Number LB 7019
1600 West Oakland Park Boulevard Ft. Lauderdale, FL 33311
E-Mail: suntech@suntechengineering.com Phone (954) 777-3123 Fax (954) 777-3114